

SHEETS 3 & 6

OLD STEAMSHIP ROAD

GROLLMAN FAMILY FARM LLC CHESTER RIVER RD

BREEDING CHRISTOPHER B BREEDING PATRICIA A 201 LOVE FARM LN

OLD LOVE POINT ROAD

GROLLMAN ROAD

INGLING VIRGINIA LEE 1180 OLD LOVE POINT RD

GROLLMAN FAMILY FARM LLC CHESTER RIVER RD

N. 440200 E. 157100

CHESTER RIVER

SHEETS 4 & 7

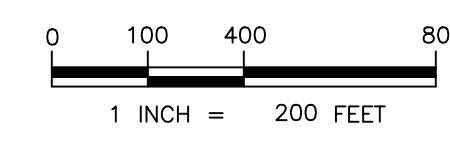
SHEETS 2 & 5

LOVE POINT ROAD

CLOVERFIELDS DRIVE

E. 157100 N. 487100

KEY SHEET



BayLand
 Consultants & Designers, Inc.
"Integrating Engineering and Environment"

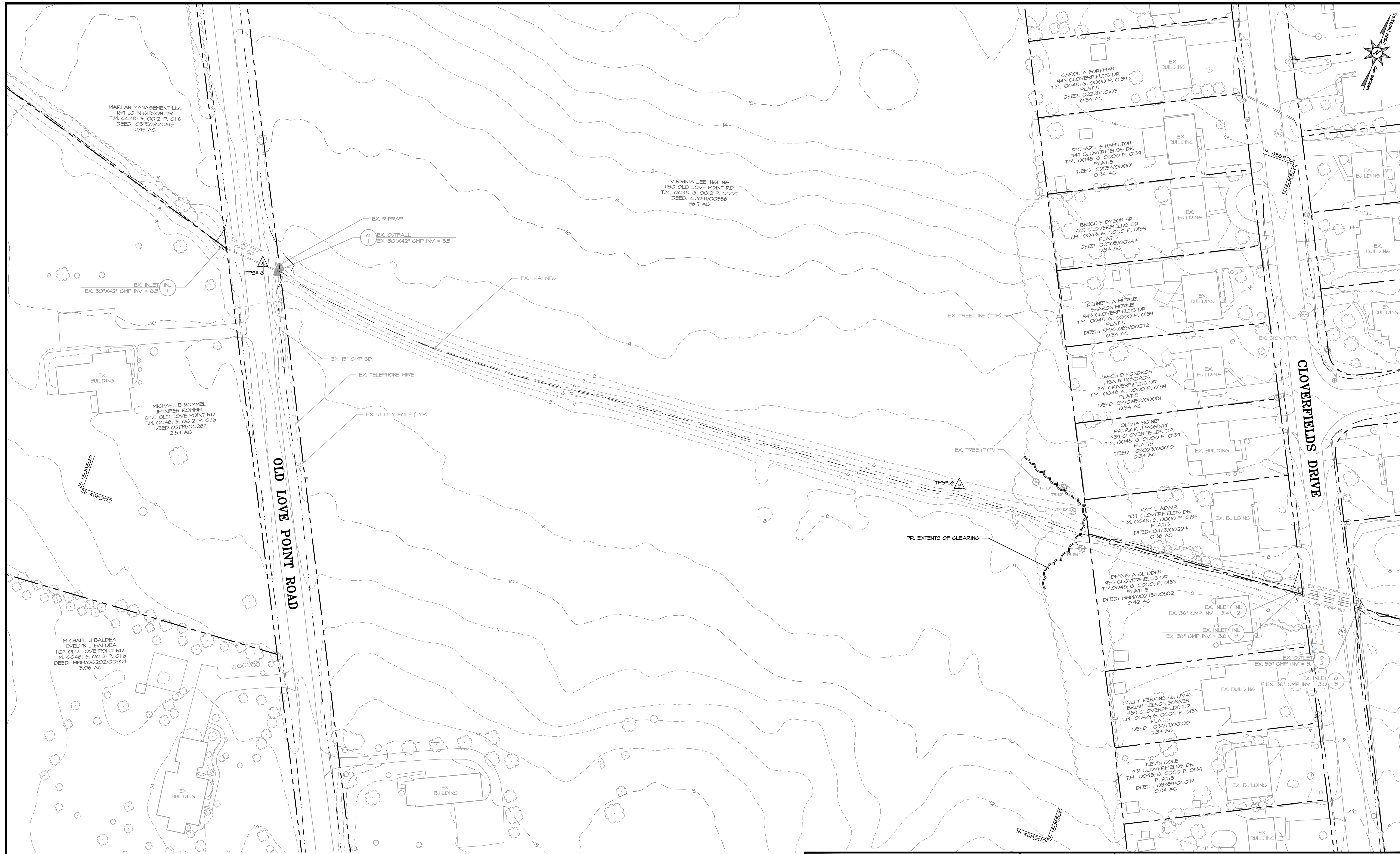
7455 New Ridge Road, Suite T Phone: (410) 694-9401
 Hanover, Maryland 21076 Fax: (410) 694-9405
 www.baylandinc.com

BAYLAND JOB NO. 8_46701

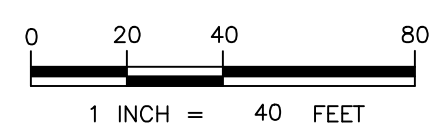
**CLOVERFIELDS FLOOD MITIGATION
KEY SHEET**

REVISIONS			SCALE: 1" = 200'	
DATE	BY	DESCRIPTION	DRAWN BY: GFM	DATE: 01/13/25
			CHECKED BY: MB	DATE: 01/13/25
			DESIGNED BY: MB/MB	DATE: 01/13/25
			SHEET NO. 1 OF 9	

Z:\8_46701\CLOVERFIELDS_FLOOD_MITIGATION\CAD Draw Sheet From PL 8_46701.dwg



EXISTING CONDITIONS & DEMOLITION PLAN

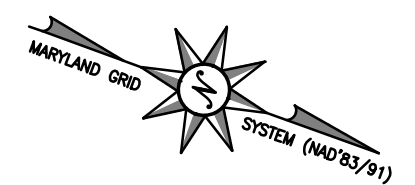


Bayland
 Consultants & Designers, Inc.
"Integrating Engineering and Environment"

7455 New Ridge Road, Suite T Phone: (410) 694-9401
 Hanover, Maryland 21076 Fax: (410) 694-9405
 www.baylandinc.com

BAYLAND JOB NO. 8_46701

REVISIONS		SCALE: 1" = 40'	
DATE	BY	DESCRIPTION	
			DRAWN BY: GFM DATE: 01/13/25
			CHECKED BY: MB DATE: 01/13/25
			DESIGNED BY: MB/MB DATE: 01/13/25
			SHEET NO. 2 OF 9



CHRISTOPHER B BREEDING
 PATRICIA A BREEDING
 201 LOPE FARM LN
 T.M. 0048; 6. 0006 P. 0004
 DEED: 02240/00155
 13.34 AC

GROLLMAN ROAD

MATCHLINE SHEET 4

EX. UTILITY POLE (TYP)

EX. OUTFALL
 4
 EX. 48" RCP INV = 2.0

EX. INLET
 4
 EX. 48" RCP INV = 2.3

EX. THALHEG

PR. EXTENTS OF CLEARING (TYP)

EX. STRUCTURE
 (TO BE REMOVED)

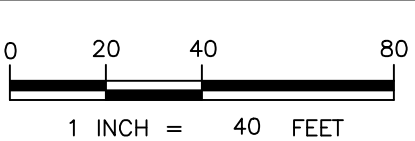
EX. TREE (TYP)

ROSCOE J MALONE
 BETH & MALONE
 217 GROLLMAN RD
 T.M. 0048; 6. 0006 P. 0135
 PLAT: SM
 DEED: 00313/00113
 1 AC

JOHN K STAFFORD
 BARBARA K STAFFORD
 218 GROLLMAN RD
 T.M. 0048; 6. 0006 P. 0152
 DEED: 00518/00410
 1 AC

GROLLMAN FAMILY FARM
 LLC
 CHESTER RIVER RD
 T.M. 0048; 6. 0000 P. 0136
 PLAT: SM
 DEED: 00301/00019
 27.84 AC

EXISTING CONDITIONS & DEMOLITION PLAN



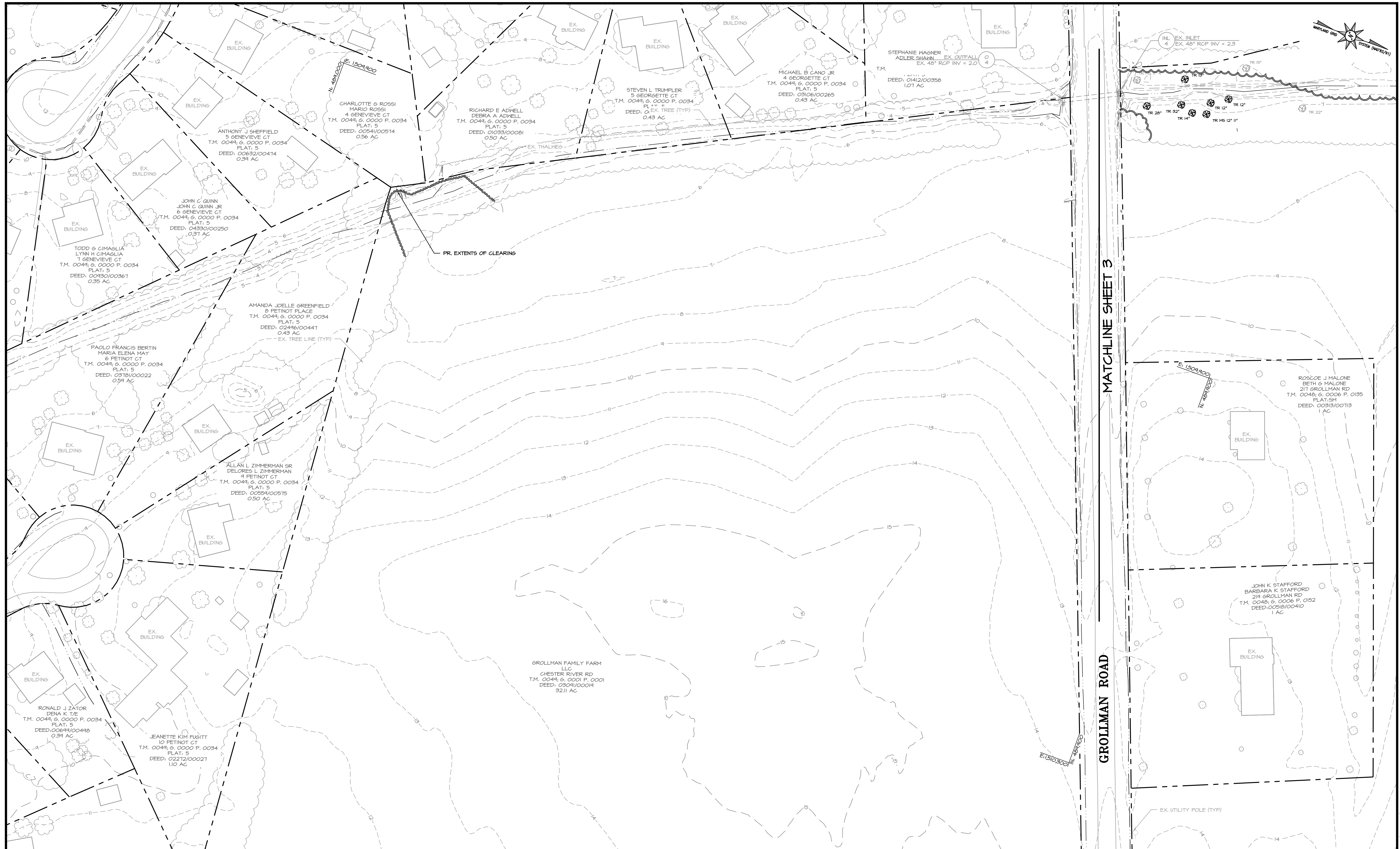
7455 New Ridge Road, Suite T Phone: (410) 694-9401
 Hanover, Maryland 21076 Fax: (410) 694-9405
 www.baylandinc.com

BAYLAND JOB NO. 8_46701

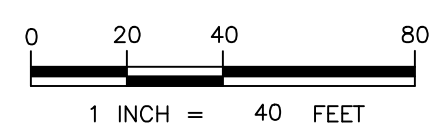
**CLOVERFIELDS FLOOD MITIGATION
 EXISTING CONDITIONS & DEMOLITION PLAN**

REVISIONS		SCALE: 1" = 40'	
DATE	BY	DESCRIPTION	
			DRAWN BY: GFM DATE: 01/13/25
			CHECKED BY: MB DATE: 01/13/25
			DESIGNED BY: MB/MB DATE: 01/13/25
			SHEET NO. 3 OF 9

Z:\8_46701\CLOVERFIELDS_21076_MITIGATION\CAD Files\Sheet From Sheet 08_46701_0303



EXISTING CONDITIONS & DEMOLITION PLAN



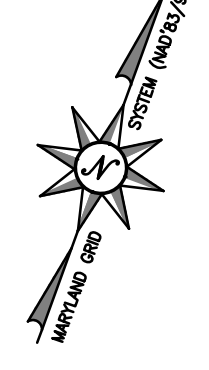
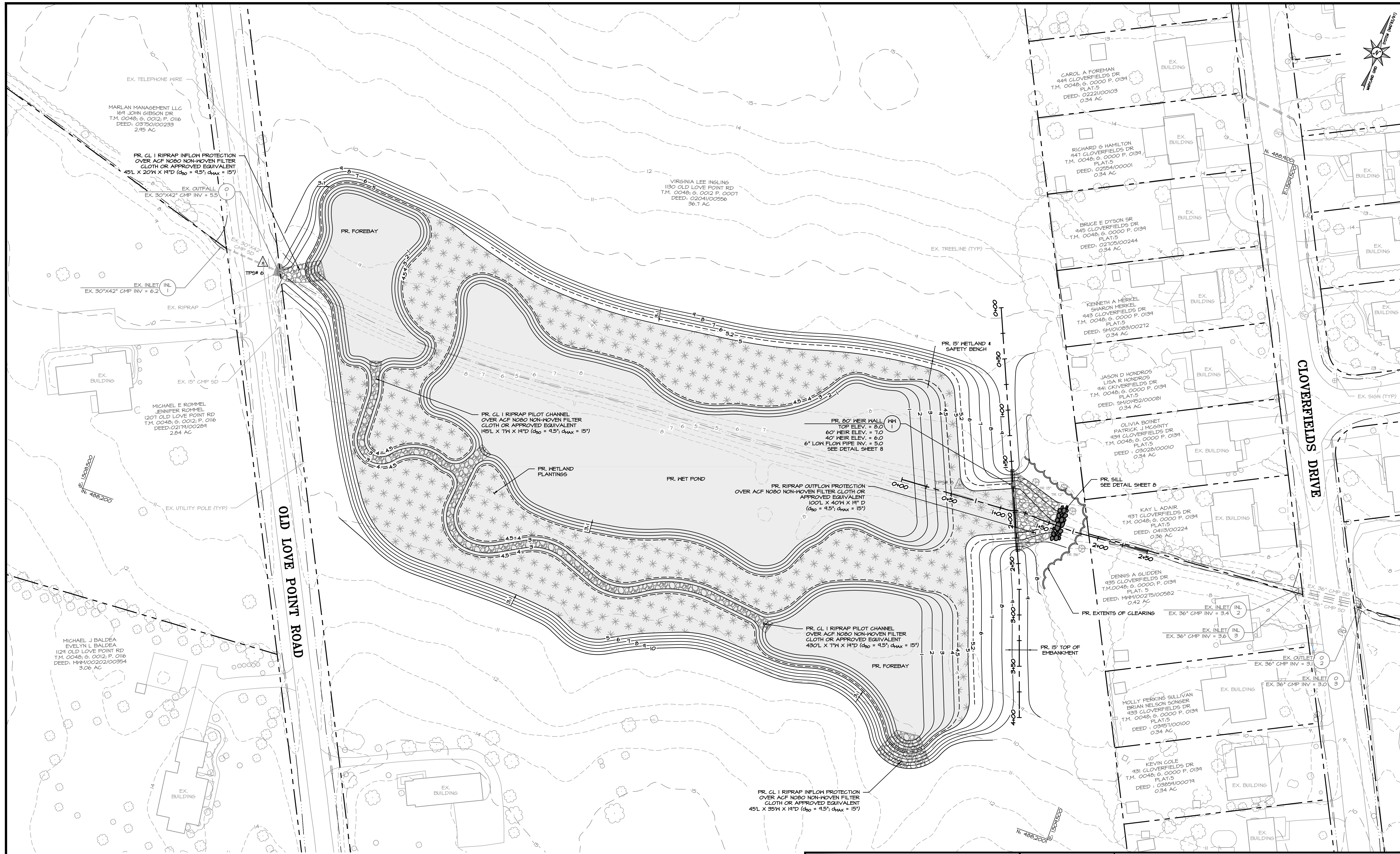
BayLand
 Consultants & Designers, Inc.
"Integrating Engineering and Environment"

7455 New Ridge Road, Suite T Phone: (410) 694-9401
 Hanover, Maryland 21076 Fax: (410) 694-9405
 www.baylandinc.com

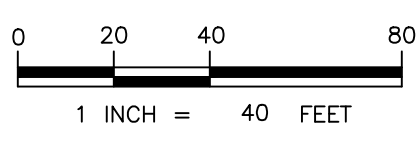
BAYLAND JOB NO. 8_46701

**CLOVERFIELDS FLOOD MITIGATION
 EXISTING CONDITIONS & DEMOLITION PLAN**

REVISIONS		SCALE: 1" = 40'	
DATE	BY	DESCRIPTION	
			DRAWN BY: GFM DATE: 01/13/25
			CHECKED BY: MB DATE: 01/13/25
			DESIGNED BY: MB/MB DATE: 01/13/25
			SHEET NO. 4 OF 9



SITE PLAN



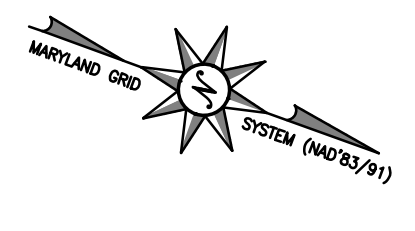
Bayland
 Consultants & Designers, Inc.
"Integrating Engineering and Environment"

7455 New Ridge Road, Suite T Phone: (410) 694-9401
 Hanover, Maryland 21076 Fax: (410) 694-9405
 www.baylandinc.com

BAYLAND JOB NO. 8_46701

REVISIONS			SCALE: 1" = 40'	
DATE	BY	DESCRIPTION	DRAWN BY: GFM	DATE: 01/13/25
			CHECKED BY: MB	DATE: 01/13/25
			DESIGNED BY: MB/MB	DATE: 01/13/25

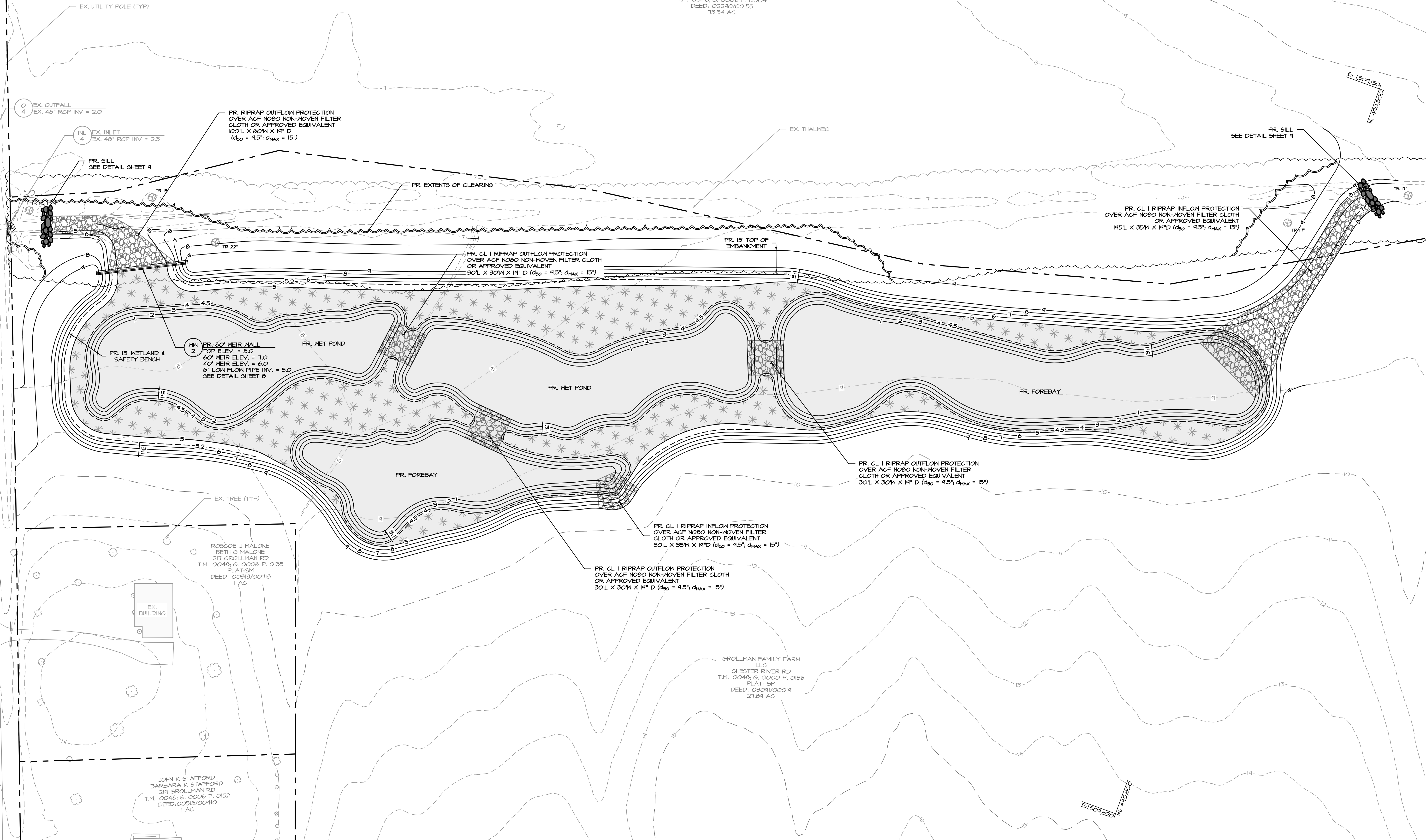
SHEET NO. 5 OF 9



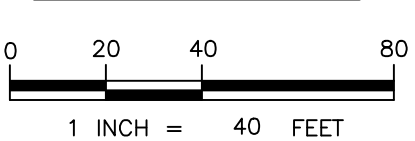
CHRISTOPHER B BREEDING
PATRICIA A BREEDING
201 LOPE FARM LN
T.M. 0048; 6, 0006 P. 0004
DEED: 02280/00195
13.34 AC

GROLLMAN ROAD

MATCHLINE SHEET 7



SITE PLAN

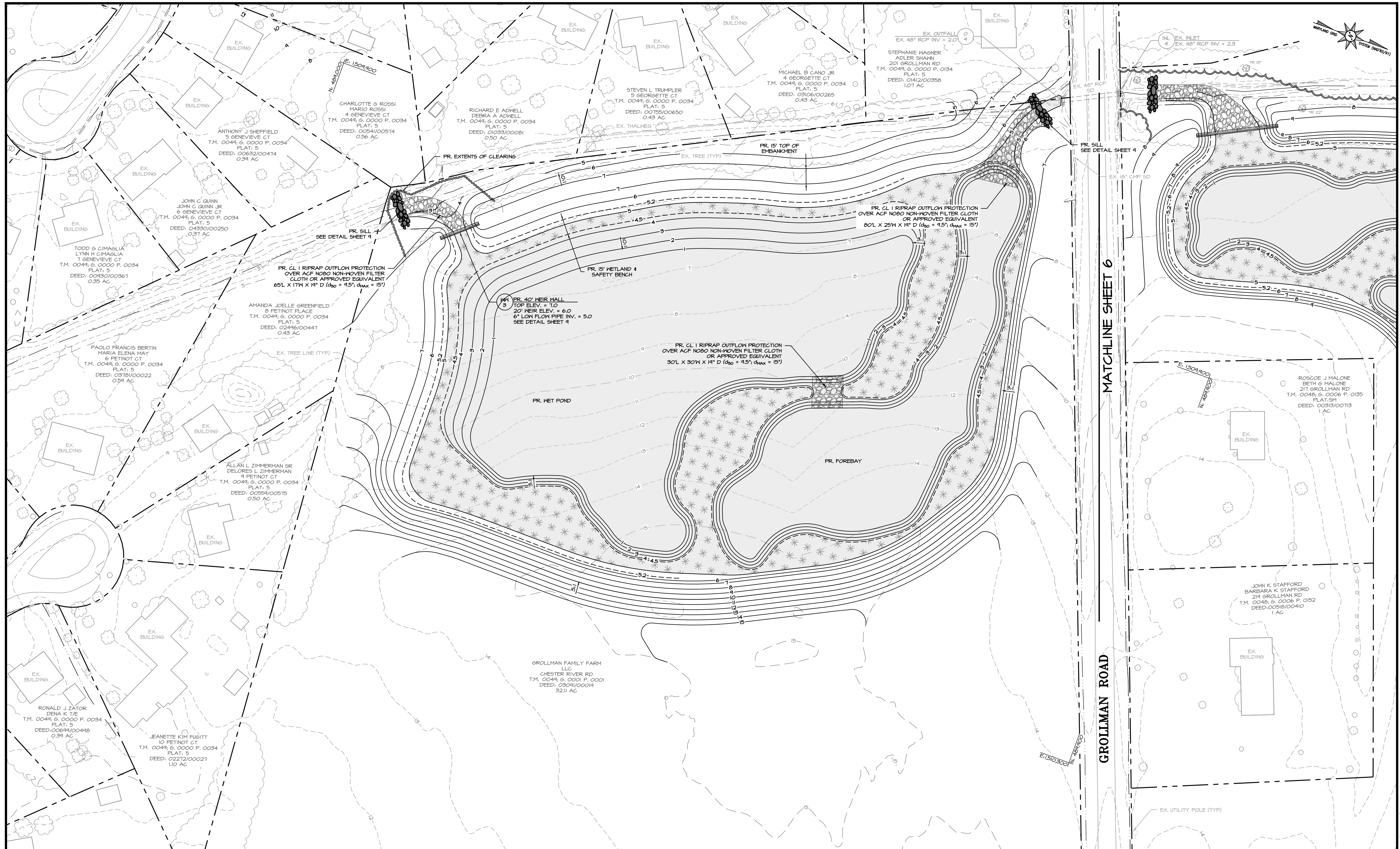


BayLand
Consultants & Designers, Inc.
"Integrating Engineering and Environment"

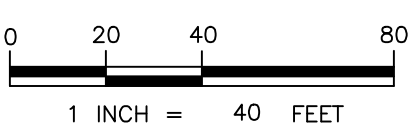
7455 New Ridge Road, Suite T Phone: (410) 694-9401
Hanover, Maryland 21076 Fax: (410) 694-9405
www.baylandinc.com

BAYLAND JOB NO. 8_46701

REVISIONS			SCALE: 1" = 40'	
DATE	BY	DESCRIPTION	DRAWN BY: GFM	DATE: 01/13/25
			CHECKED BY: MB	DATE: 01/13/25
			DESIGNED BY: MB/MD	DATE: 01/13/25
			SHEET NO. 6 OF 9	



SITE PLAN



BayLand
 Consultants & Designers, Inc.
"Integrating Engineering and Environment"

7455 New Ridge Road, Suite T Phone: (410) 694-9401
 Hanover, Maryland 21076 Fax: (410) 694-9405
 www.baylandinc.com
 BAYLAND JOB NO. 8_46701

**CLOVERFIELDS FLOOD MITIGATION
 SITE PLAN**

REVISIONS		SCALE: 1" = 40'	
DATE	BY	DESCRIPTION	
			DRAWN BY: GFM DATE: 01/13/25
			CHECKED BY: MB DATE: 01/13/25
			DESIGNED BY: MB/MB DATE: 01/13/25
			SHEET NO. 7 OF 9